

**INSTALLATION
INSTRUCTIONS
FOR
GREASE GUZZLER**

INSTALLATION INSTRUCTIONS FOR THE GREASE GUZZLER

INDEX

1.	WPL Policy Statement - Grease Guzzler v Mini Guzzler	3
2.	Health and Safety	3
3.	Grease Guzzler Dimensions	4
4.	Installation	4
5.	Services	5
6.	Electricity	5
7.	Wall Fixing Diagram	6
8.	BioFluid Data Sheet	7

WPL Policy Statement for the Selection of Grease Guzzler v Mini Guzzler

Grease Guzzler should be selected where the drainage run to be protected includes either grease traps or pumping stations, or terminates at an on-site, private sewage treatment works

Mini Guzzler is recommended only for keeping gravity fall drainpipes that run directly to the main sewer clear of sidewall grease congestion.

HEALTH AND SAFETY

United Kingdom Health and Safety at Work Act 1974

Section 6a of this act requires manufacturers to advise their customers on the safety and the handling precautions to be observed when operating, maintaining and servicing their products.

The user's attention is drawn to the following:

All the sections of this manual must be read before working on the equipment.

Suitably trained and qualified personnel must carry out installation.

Normal safety precautions must be taken and appropriate procedures observed to avoid accidents.

Refer to WPL Ltd for any technical advice or product information.

INSTALLATION INSTRUCTIONS FOR THE GREASE GUZZLER

Grease Guzzler

The Grease Guzzler is designed to dose bio fluid into drain lines that connect to a pumping station or an on site sewage treatment plant. The unit should discharge into the drain lines as close as possible to the source of any grease. If a grease trap is fitted the requirement for cleaning should be reduced, just leaving food waste to be removed if required. The bio fluid is designed to break down the grease and avoid any build up in the drain lines or treatment plant.

<i>Dimensions</i>	
<i>Height</i>	700mm
<i>Width</i>	500mm
<i>Depth</i>	260mm
<i>Weight - NO FLUID</i>	35kg
<i>Weight - WITH FLUID</i>	45kg

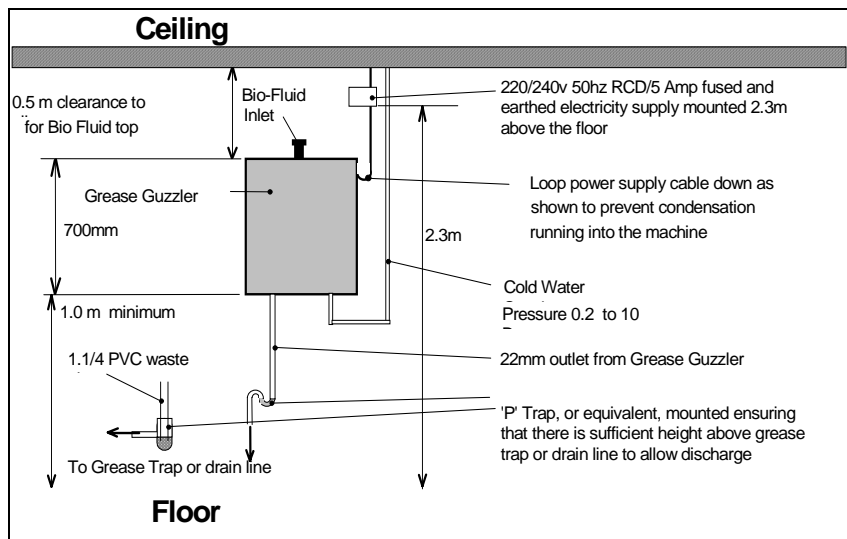
CAUTION: when fitted to an existing system that is contaminated with grease this will be released from the pipes in large sections and may initially block the system. It is advisable to pressure wash the system at the time of installation if there are signs of grease build up.

Please note that this manual does not include the timing settings for dosing. That information, along with other operation and maintenance matters, is included within the O & M manual and should properly be carried out by the authorized service engineers.

1. INSTALLATION

1.1. Installation Location of the Grease Guzzler

- 1.1.1. Wall mounted on an internal wall at an elevated position sufficient to permit gravity feed of pre activated Bio-Fluid to the grease trap or drain line. See diagram.
- 1.1.2. The unit must not be placed in the immediate location of a heater as excessive heat may overheat internal components or damage the plastic front panel (Maximum + 40⁰ C).
- 1.1.3. Ensure that the Grease Guzzler is mounted vertically - use a spirit level.



- 1.1.4. Ensure that there is sufficient room above the Grease Guzzler to access the filler tube of the Bio-Fluid tank for filling purposes.
- 1.1.5. When installing the Grease Guzzler unit it is advisable to leave one metre (1m) of free air space either side of the unit to allow ease of installation, ventilation and access.
- 1.1.6. The Grease Guzzler must be protected from frost, + 5⁰ C minimum ambient temperature. Maximum ambient temperature of installation + 40⁰ C.

INSTALLATION INSTRUCTIONS FOR THE GREASE GUZZLER

2. Services

2.1. Water inlet.

- 2.1.1. Cold water with a minimum supply pressure of 0.2 bar (2m) and a maximum of 10 Bar 15m Compression fitting for provided 15mm OD copper tube
- 2.1.2. Units have an internal water control valve which must be set to the required rate on commissioning to avoid splashing.
- 2.1.3. Avoid fitting a valve in the line that can be easily turned off accidentally. Use a lockshield or similar and, if possible, place out of normal reach.

THIS IS IMPORTANT FOR MINI GUZZLER AS THE DRY POWDER WILL BLOCK THE DISCHARGE LINE VERY QUICKLY. THEN, IF THE WATER IS TURNED ON WITHOUT CHECKING, FLOODING WILL OCCUR.

2.2. Electricity

- 2.2.1. Mains electricity 220/240V ac.
- 2.2.2. **WARNING: - THIS APPLIANCE MUST BE EARTHED**
- 2.2.3. An earthed electricity supply to be provided via an unswitched **5amp fused outlet. An RCD unit is preferred. No internal fuse is fitted.**

IMPORTANT: The wires in the mains lead fitted to the Grease Guzzler are coloured with the following code:

Green/Yellow	- Earth
Brown	- Live
Blue	- Neutral

- 2.2.4. The colours of the wires in the mains lead of this appliance may not correspond with the colour markings identifying the terminals in your fused outlet. Proceed as follows:-
The wire which is coloured green and yellow must be connected to the terminal in the fused outlet which is marked with the letter E or by the earth symbol or coloured green or green and yellow.
The wire, which is coloured blue, must be connected to the terminal that is marked with the letter N or coloured black.
The wire, which is coloured brown, must be connected to the terminal that is marked with the letter L or coloured red.
- 2.2.5. Fuses must be 5A and ASTA approved to BS1363
- 2.2.6. If the mains lead is damaged, the manufacturer (WPL) or one of its service agents, or a similarly qualified person must replace it. The conductors must each have a minimum cross sectional area of 0.75mm²

2.3. Bio-Fluid Outlet

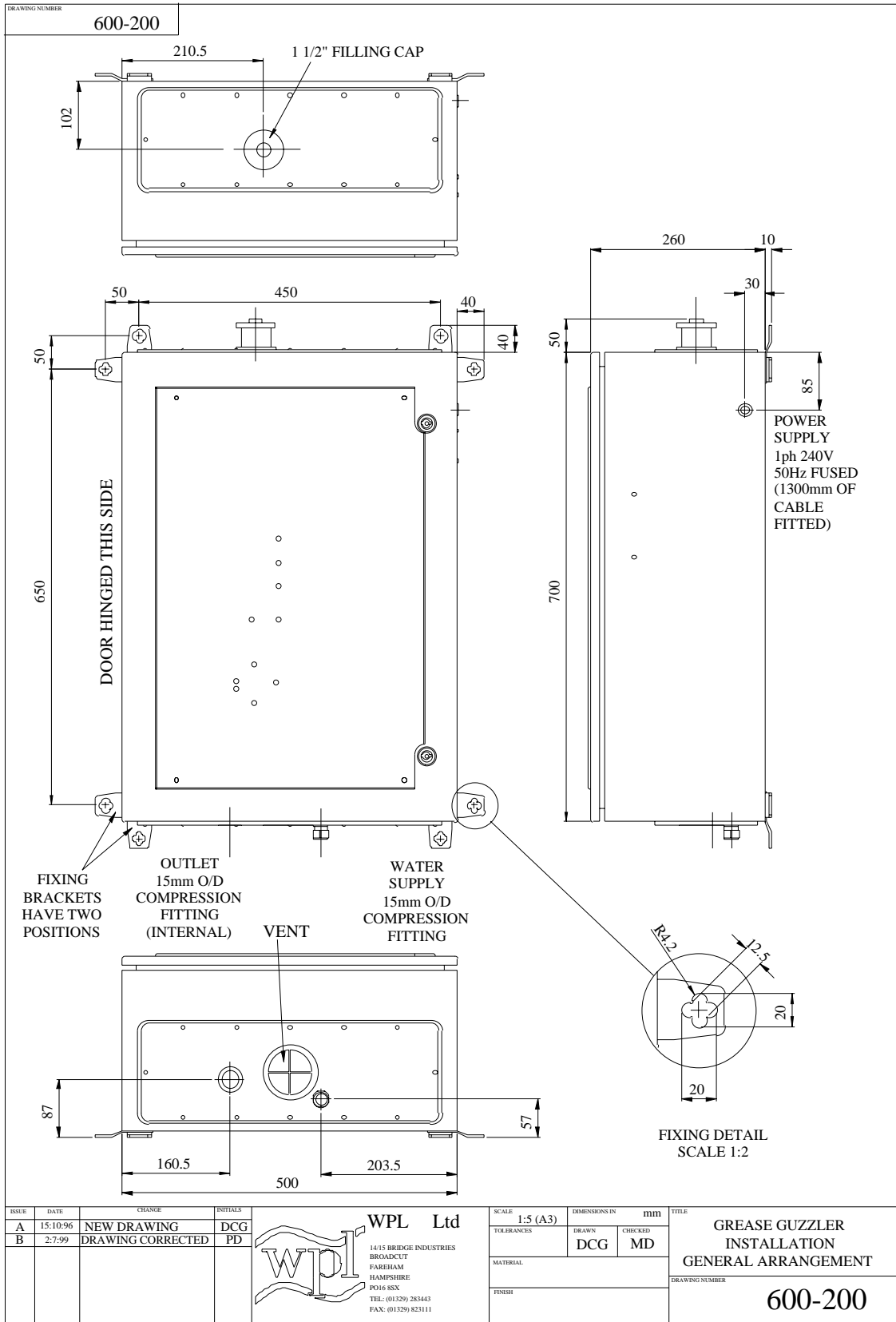
- 2.3.1. Close proximity to source of any grease is desirable with a minimum of 0.5m of air space above it.
- 2.3.2. A 22mm compression fitting is fitted to the appliance. This to be fed into the drain line via a connecting tube and a 'P' trap or equivalent, ensuring that the tube falls steadily away from the Grease Guzzler to avoid excessive Bio-Fluid residue remaining within the tube.
- 2.3.3. For the best results, the tube should discharge into the grease trap at a point on top of where the grease layer builds up if this can be practically achieved. Alternatively, entry into the drainage system at any convenient point before the grease trap is acceptable.

2.4. Overflows

- 2.4.1. Liquid overflow from the mixing tank exits via the 22mm Bio-Fluid outlet tube. This is a safety feature so that should the mixing tank overflow, it will not flood the kitchen.

INSTALLATION INSTRUCTIONS FOR THE GREASE GUZZLER

Wall Fixing Diagram



INSTALLATION INSTRUCTIONS FOR THE GREASE GUZZLER

WPL LTD. UNITS 1 & 2 ASTON ROAD, WATERLOOVILLE, HAMPSHIRE PO7 7UX.
TEL: 023 92 242 600. FAX: 023 92 242 624

Health and Safety Data Sheet Sheet 1 of 2

1 Commercial Product Name Supplier **Bio-Fluid S45**
(For use only in WPL Grease Guzzler)

WPL Ltd.
Units 1 & 2 Aston Road, Waterlooville, Hampshire
Tel. 023 92 242 600. Fax. 023 92 242 624

2 Composition Naturally occurring soil biocatalyst proprietary organic biodegradable materials

3 Hazards Identification Dermal exposure may cause mild irritation of skin. Avoid contact. Moderately irritating to the eyes

4 First Aid Measures Skin contact: Wash with soap and water. If irritation persists consult doctor
Eye contact: Wash immediately with copious quantity of water
Ingestion: Do not induce vomiting, get medical help
Inhalation: Remove to fresh air, get medical help

If symptoms persist seek medical advice

5 Fire Fighting Extinguishing media:
Use appropriate media for underlying cause of fire
Hazardous combustion gases:
None

6 Accidental Release After spillage, dilute with water and wash to drain.
Sweep up and recover or mix with absorbent and shovel into container. Wash spilled area with disinfectant. Dispose of in accordance with local and state regulations.
Cleaning of equipment:
Wash with plenty of water

7 Handling/Storage All materials should be handled under good housekeeping practices:
wash hands after use; wear gloves if exposure is prolonged.
Care should be taken to ensure product is not introduced to drinking water or foodstuffs.
Store in a dry and cool place, within temperature range 5-35 deg. C. Avoid direct sunlight.
Keep away from strong oxidisers, strong acid, alkali and organic solvents.

8 Exposure Controls Respiratory protection: Approved dust mask as required
Personal Hand protection: Gloves recommended
Protection Eye protection: Recommended when handling large quantities

9 Physical/Chemical Appearance: Pale blue liquid
Properties Odour Faint pleasant fragrance
pH: 4-7.5
Boiling point: 100 deg. C.
Melting point: Not applicable

Health and Safety Data Sheet

Sheet 2 of 2

10 Stability and Reactivity	Material is stable under normal conditions of use Known hazardous reactions: None Hazardous decomposition products: None			
11 Toxicological Information	Toxicity: No acute toxicity Pathogenicity: Component bacteria are non-pathogenic and generally regarded as safe Carcinogenicity: No known carcinogens			
12 Ecological Information	Product believed not to be dangerous to the environment with respect to mobility, persistency and degradability, bioaccumulative potential, aquatic toxicity and other data relating to ecotoxicity			
13 Disposal Considerations	No special disposal treatment necessary, except that it be in accordance with local authority regulations			
14 Transport	Regulations	Class	UN-Nr	PGr
	RID/ADR	not classified		
	ICAO/IATA-DGR	not classified		
	GGVSee/IMDG-Code:	not classified		
15 Regulatory Information	Label name: WPL Bi-Fluid S45 Symbols: None Risk phrases: None Safety phrases: Keep away from children. Preparation does not contain ingredients listed as dangerous substances in Annex 1 of the EEC directive 67/548			
16 Other	Product should be stored, handled and used in accordance with good industrial hygiene practices and in conformity with legal regulations. The information contained herein is based on the present state of our knowledge and is intended to describe our products from the point of view of safety requirements. It should therefore not be construed as guaranteeing specific properties. All information contained within this Health and Safety Data Sheet is believed to be true and correct as at date of issue. However, the accuracy and completeness of the information and any recommendations or suggestions are made without warranty or guarantee. As conditions of use are beyond the control of WPL, responsibility for safe use lies with the user.			

..... *Working for a cleaner future*

WPL LTD. Registered in England and Wales No. 2583411. Vat No. 568 3801 15